

December 31, 2009



Fund Fact Sheet

The Government Street Mid Cap Fund

**Objective**

Capital Appreciation

**Types of Investments**

Common stocks of medium capitalization companies which are broadly diversified among economic sectors and industries.

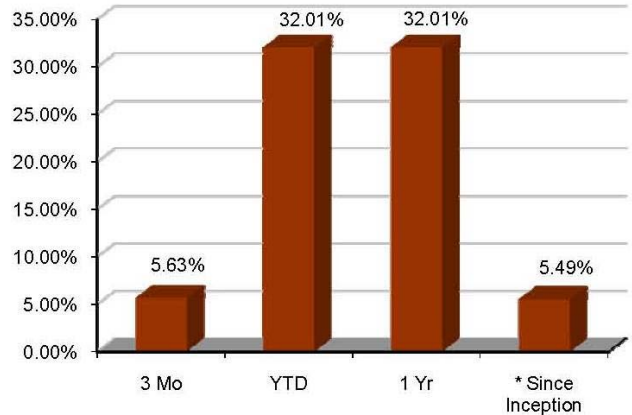
**Fund Statistics**

Ticker Symbol	GVMCX
Assets	\$30.5 million
Turnover Ratio	11%
Total Number of Holdings	178
Front End Sales Charge	0%
Deferred Sales Charge	0%
12b-1 Fee Charge	0%
Expense Ratio	1.10%
Geometric Avg Mkt Capitalization	\$3.7 million
Minimum Initial Investment	\$5,000
* Inception Date	November 17, 2003

**Largest Holdings**

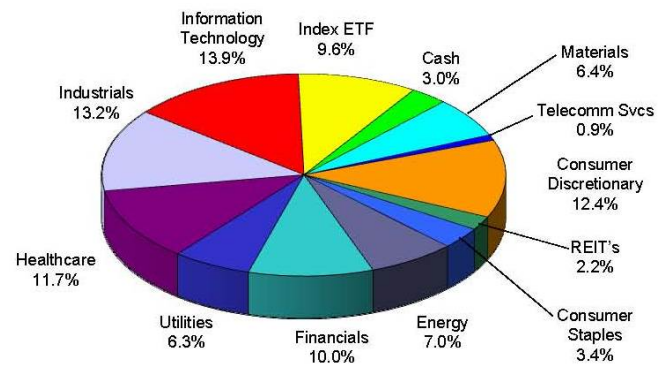
iShares Tr S&P MidCap 400	4.51%
Vanguard Idx Fds Mid Cap	2.85%
Vanguard Bd Idx Fd Short Trm Bond	2.35%
Cerner Corp	1.62%
Stericycle Inc	1.50%
Vanguard Intl Eqty Idx Emer Mkt	1.21%
Cree Inc	1.20%
Cognizant Tech Solutns	1.19%
FMC Technologies Inc	1.10%
Church & Dwight Inc	1.07%

**Average Annual Total Returns**



The performance data quoted above represent past performance and include reinvestment of dividends and capital gains; they are not a guarantee of future results. The investment return and principal value of an investment in the Fund will fluctuate so that an investor's shares, when redeemed, may be worth more or less than their original cost. Performance information through the most recent month end is available by calling 1-866-738-1125. An investor should consider the Fund's investment objectives, risks, and charges and expenses carefully before investing. The Fund's prospectus contains this and other important information. You may obtain a copy of the Fund's prospectus at [www.leavellinvestments.com](http://www.leavellinvestments.com) or by calling 1-866-738-1125. Please read the prospectus carefully before you invest or send money.

**Sector Weightings**



Sector weightings and the Fund's largest holdings are subject to change without notice. Distributed by Ultimus Fund Distributors,

P.O. Box 1307 ■ Mobile, AL 36633  
(251) 433-3709 Tel ■ (251) 433-3723 Fax

800 Shades Creek Pkwy., Suite 585 ■ Birmingham, AL 35209  
(205) 879-1654 Tel ■ (205) 871-8708 Fax